
PRESS RELEASE

New Integrated Display Solutions for Commercial, Cruise & Yacht, Naval & Defense Applications

First widescreen Marine Panel Computers

CONRAC introduces a series of Marine Grade Panel PCs adding the flexibility of an integrated solution to the benefits of their well-proven *wide*ECDIS Marine Displays.

Very experienced in the integration of industrial PCs, CONRAC designed the ultimate Marine Panel Computer specified to run all marine applications, from automation and control to ECDIS and Navigation.

Designed for 24/7 operation, this embedded solution offers an extremely reliable platform. The integrated high performance industrial PC is based on the latest low-power embedded technology. It does not only secure lowest power consumption, it also guarantees optimum performance and reliability.

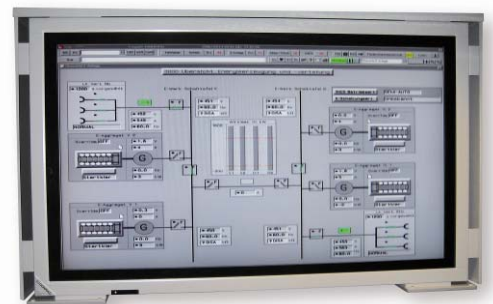
As a special feature, CONRAC integrated a proprietary system monitoring application called SysMon which is used to control various settings and to obtain exact information on a multitude of parameters. It controls the backlights, supervises the system and allows the integration of the next generation of Ambient Light Control, ALCplus.

Available are console mount versions with screen sizes of 22" (56cm) and 26" (66cm) diagonal, of course offering the same look-and-feel as the monitor only versions. Offering the same look and feel, the only eye-catching difference between the integrated solution and the monitor-only version are two front USBs.



Extra large and extra tough

CONRAC's large screen Naval Displays have been tested according to various MIL standards. Active in the research and development of special display solutions for decades, CONRAC has established a reputation as a leading manufacturer of large screen solutions for extremely harsh maritime environments. CONRAC's series of ruggedized displays up to a screen size of 65" (165cm) has been tested according to MIL-STD-167 and 810. Furthermore the displays proved to withstand severe underwater explosions up to 100g. Optionally available are touch solutions and integrated IPCs.



CONTACT

CONRAC GmbH, Lindenstrasse 8, D-97990 Weikersheim, Germany
Phone +49-7934-101-0, Fax +49-7934-101-101, E-Mail info@conrac.de, www.conrac.de

Contact / Press:

Petra Ollhoff, Manager Marketing Communications

Phone +49-7934-101-204, Fax +49-7934-101-102, E-Mail p.ollhoff@conrac.de

Contact / Technical:

Jörn Wittig, Product Manager Custom Solutions

Phone +49-7934-101-227, E-Mail j.wittig@conrac.de

CONRAC_SMM2010_e.doc

